

## **Lambrick Way north of Feltham Rd**

**March 03, 2020 To March 05, 2020**



The data presented here is for information purposes only and should not be considered authoritative for construction, geotechnical, engineering, navigational, legal, or other site-specific uses. The information shared is owned by the Transportation Division of the Engineering Department at the District of Saanich. Accuracy is not guaranteed.

Start Date: 2-Mar-20  
 Start Time: 0:33  
 Station ID: P0001-01

**Location 1: Lambrick Way north of Feltham Rd**

Note:

DATE:	March 2, 2020		March 3, 2020		March 4, 2020		March 5, 2020		March 6, 2020		WK AVG		WK AVG	HOURLY
	MON		TUE		WED		THURS		FRI				CH 1+2	%
Time:	NB	SB	NB	SB	NB	SB	NB	SB	NB	SB	NB	SB		
12-1 AM			1	1	1	0	0	0			1	0	1	0.0%
1-2 AM			0	0	3	3	2	1			2	1	3	0.1%
2-3 AM			0	1	0	1	1	2			0	1	2	0.1%
3-4 AM			0	0	0	0	0	0			0	0	0	0.0%
4-5 AM			0	0	1	1	0	1			0	1	1	0.0%
5-6 AM			26	0	30	0	23	1			26	0	27	1.0%
6-7 AM			32	18	36	14	34	9			34	14	48	1.8%
7-8 AM			44	34	45	43	46	47			45	41	86	3.3%
8-9 AM			98	56	118	49	105	47			107	51	158	6.1%
9-10 AM			106	53	87	73	112	68			102	65	166	6.4%
10-11 AM			65	107	100	100	76	99			80	102	182	7.0%
11-12 PM			72	70	87	99	62	71			74	80	154	5.9%
12-1 PM			58	92	76	110	70	95			68	99	167	6.5%
1-2 PM			57	42	70	86	57	45			61	58	119	4.6%
2-3 PM			48	52	68	55	43	58			53	55	108	4.2%
3-4 PM			94	92	90	84	103	85			96	87	183	7.1%
4-5 PM			123	85	100	94	83	86			102	88	190	7.4%
5-6 PM			139	98	133	99	135	94			136	97	233	9.0%
6-7 PM			133	134	108	116	107	123			116	124	240	9.3%
7-8 PM			126	145	72	98	92	112			97	118	215	8.3%
8-9 PM			68	126	61	76	50	83			60	95	155	6.0%
9-10 PM			29	85	35	65	39	54			34	68	102	4.0%
10-11 PM			2	29	0	50	1	56			1	45	46	1.8%
11-12 AM			1	3	0	1	1	1			1	2	2	0.1%
<b>LANES</b>			<b>1322</b>	<b>1323</b>	<b>1321</b>	<b>1317</b>	<b>1242</b>	<b>1238</b>			<b>1295</b>	<b>1293</b>	<b>2588</b>	<b>100.0%</b>
<b>TOTAL</b>			<b>2645</b>		<b>2638</b>		<b>2480</b>				<b>2590</b>			
	MON		TUE		WED		THURS		FRI	WK AVG				

PEAK HOUR					TOTAL VEHICALS-PEAK PERIODS		2 HOUR PEAK INTERVALS				
MAX. 7 - 9 am PEAK HOUR	158	⇒	6.1%	between 8-9 AM	988	⇒	6 HR TOTAL	<b>2 HR AM (7 - 9 AM)</b>			
MAX. 7 - 11 am PEAK HOUR	182	⇒	7.0%	between 10-11 AM	667	⇒	4 HR TOTAL	VEH / HR	VEH / 2HR	2 HR %	
MAX. 11 am - 1 pm PEAK HOUR	167	⇒	6.5%	between 12-1 PM				7-8 AM	86	244	9.4%
MAX. 11 am - 3 pm PEAK HOUR	167	⇒	6.5%	between 12-1 PM				8-9 AM	158		
MAX. 4 - 6 pm PEAK HOUR	233	⇒	9.0%	between 5-6 PM				<b>2 HR NOON (11 - 1 PM)</b>			
MAX. 3 - 6 pm PEAK HOUR	233	⇒	9.0%	between 5-6 PM				VEH / HR	VEH / 2HR	2 HR %	
								11-12 PM	154	321	12.4%
								12-1 PM	167		
								<b>2 HR PM (4 - 6 PM)</b>			
								VEH / HR	VEH / 2HR	2 HR %	
								4-5 PM	190	423	16.3%
								5-6 PM	233		

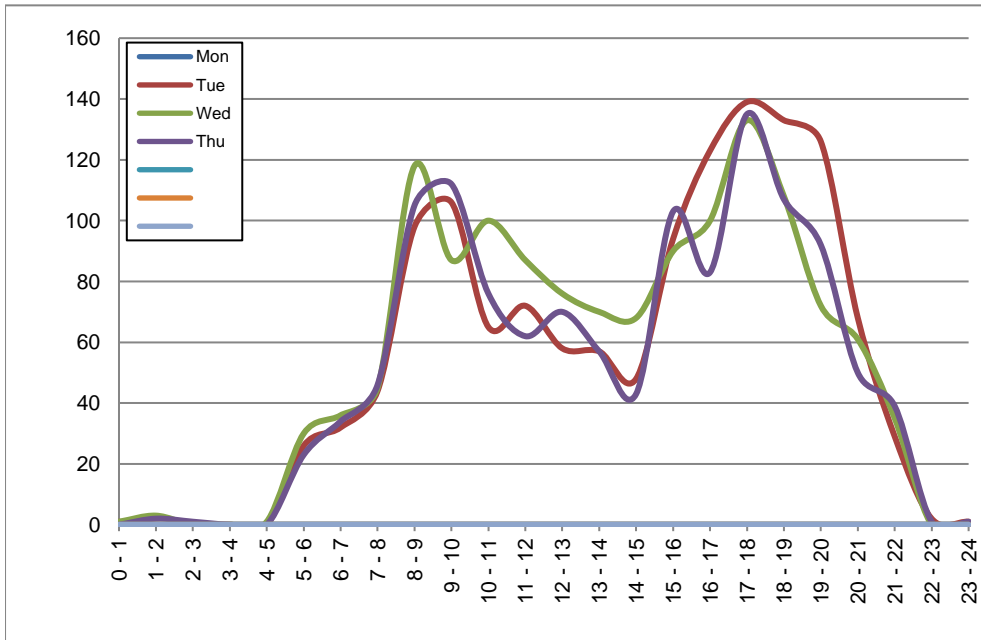
# Lambrick Way north of Feltham Rd

Northbound

March 2, 2020 to March 5, 2020

## Hourly Volumes

Time Period	Mon Mar 2	Tue Mar 3	Wed Mar 4	Thu Mar 5
0 - 1		1	1	0
1 - 2		0	3	2
2 - 3		0	0	1
3 - 4		0	0	0
4 - 5		0	1	0
5 - 6		26	30	23
6 - 7		32	36	34
7 - 8		44	45	46
8 - 9		98	118	105
9 - 10		106	87	112
10 - 11		65	100	76
11 - 12		72	87	62
12 - 13		58	76	70
13 - 14		57	70	57
14 - 15		48	68	43
15 - 16		94	90	103
16 - 17		123	100	83
17 - 18		139	133	135
18 - 19		133	108	107
19 - 20		126	72	92
20 - 21		68	61	50
21 - 22		29	35	39
22 - 23		2	0	1
23 - 24		1	0	1
<b>Day Total</b>		<b>1322</b>	<b>1321</b>	<b>1242</b>



Site notes:

## 15-Minute Volumes

Time Start	Mon Mar 2	Tue Mar 3	Wed Mar 4	Thu Mar 5	
0:00		0	0	0	
0:15		0	0	0	
0:30		1	1	0	
0:45		0	0	0	
1:00		0	0	1	
1:15		0	2	0	
1:30		0	0	1	
1:45		0	1	0	
2:00		0	0	1	
2:15		0	0	0	
2:30		0	0	0	
2:45		0	0	0	
3:00		0	0	0	
3:15		0	0	0	
3:30		0	0	0	
3:45		0	0	0	
4:00		0	0	0	
4:15		0	0	0	
4:30		0	0	0	
4:45		0	1	0	
5:00		1	1	1	
5:15		0	0	0	
5:30		3	3	4	
5:45		22	26	18	
6:00		17	15	13	
6:15		5	5	9	
6:30		5	6	4	
6:45		5	10	8	
7:00		8	8	11	
7:15		8	7	8	
7:30		10	10	14	
7:45		18	20	13	
8:00		10	17	16	
8:15		20	26	18	
8:30		26	33	26	
8:45		42	42	45	
9:00		22	25	42	
9:15		42	14	19	
9:30		15	23	25	
9:45		27	25	26	
10:00		9	32	20	
10:15		16	14	18	
10:30		17	26	17	
10:45		23	28	21	
11:00		17	19	14	
11:15		16	16	8	
11:30		15	28	15	
11:45		24	24	25	
12:00			9	22	17
12:15			10	15	12
12:30			14	23	19
12:45			25	16	22
13:00			11	24	10
13:15			18	21	13
13:30			15	14	11
13:45			13	11	23
14:00			11	12	13
14:15			14	13	11
14:30			10	22	6
14:45			13	21	13
15:00			13	20	20
15:15			22	20	30
15:30			23	22	22
15:45			36	28	31
16:00			16	18	15
16:15			31	27	18
16:30			31	28	20
16:45			45	27	30
17:00			42	34	34
17:15			25	41	34
17:30			22	32	19
17:45			50	26	48
18:00			33	16	29
18:15			31	32	33
18:30			20	27	22
18:45			49	33	23
19:00			54	20	22
19:15			36	17	25
19:30			21	19	28
19:45			15	16	17
20:00			29	14	18
20:15			10	12	11
20:30			25	18	10
20:45			4	17	11
21:00			7	13	10
21:15			9	11	16
21:30			8	7	9
21:45			5	4	4
22:00			0	0	0
22:15			1	0	0
22:30			1	0	1
22:45			0	0	0
23:00			1	0	0
23:15			0	0	0
23:30			0	0	0
23:45			0	0	1

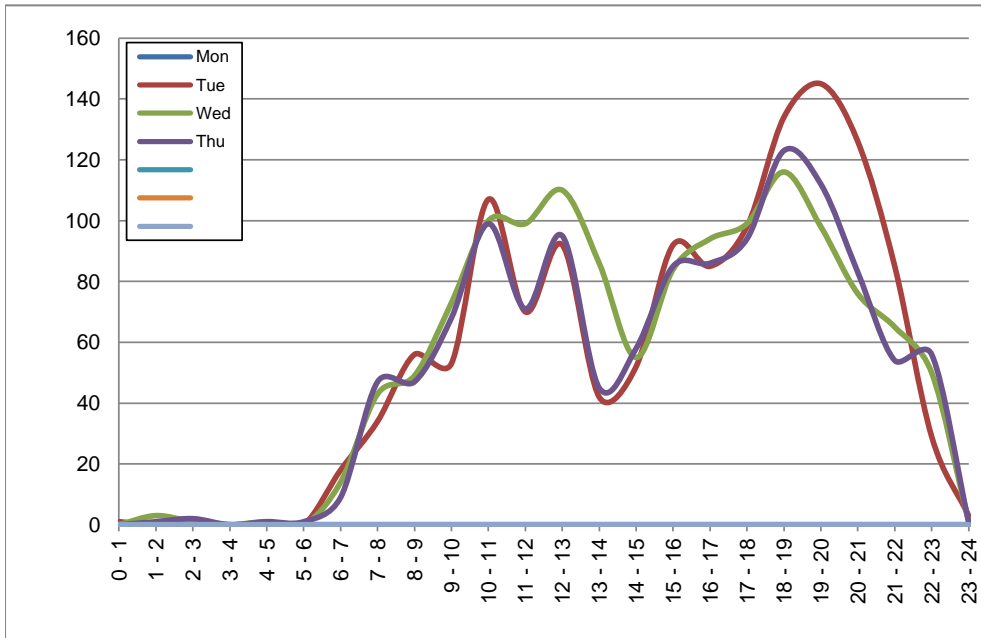
# Lambrick Way north of Feltham Rd

Southbound

March 2, 2020 to March 5, 2020

## Hourly Volumes

Time Period	Mon	Tue	Wed	Thu			
	Mar 2	Mar 3	Mar 4	Mar 5			
0 - 1		1	0	0			
1 - 2		0	3	1			
2 - 3		1	1	2			
3 - 4		0	0	0			
4 - 5		0	1	1			
5 - 6		0	0	1			
6 - 7		18	14	9			
7 - 8		34	43	47			
8 - 9		56	49	47			
9 - 10		53	73	68			
10 - 11		107	100	99			
11 - 12		70	99	71			
12 - 13		92	110	95			
13 - 14		42	86	45			
14 - 15		52	55	58			
15 - 16		92	84	85			
16 - 17		85	94	86			
17 - 18		98	99	94			
18 - 19		134	116	123			
19 - 20		145	98	112			
20 - 21		126	76	83			
21 - 22		85	65	54			
22 - 23		29	50	56			
23 - 24		3	1	1			
<b>Day Total</b>		<b>1323</b>	<b>1317</b>	<b>1238</b>			



Site notes:

## 15-Minute Volumes

Time Start	Mon	Tue	Wed	Thu				Time Start	Mon	Tue	Wed	Thu			
	Mar 2	Mar 3	Mar 4	Mar 5					Mar 2	Mar 3	Mar 4	Mar 5			
0:00		0	0	0				12:00		27	49	39			
0:15		0	0	0				12:15		25	25	30			
0:30		1	0	0				12:30		24	15	15			
0:45		0	0	0				12:45		16	21	11			
1:00		0	1	0				13:00		16	26	12			
1:15		0	2	1				13:15		11	18	16			
1:30		0	0	0				13:30		5	19	10			
1:45		0	0	0				13:45		10	23	7			
2:00		0	1	1				14:00		15	14	21			
2:15		0	0	1				14:15		15	12	9			
2:30		1	0	0				14:30		13	15	19			
2:45		0	0	0				14:45		9	14	9			
3:00		0	0	0				15:00		24	20	12			
3:15		0	0	0				15:15		19	27	32			
3:30		0	0	0				15:30		26	15	26			
3:45		0	0	0				15:45		23	22	15			
4:00		0	0	1				16:00		16	17	11			
4:15		0	1	0				16:15		15	22	14			
4:30		0	0	0				16:30		24	37	42			
4:45		0	0	0				16:45		30	18	19			
5:00		0	0	0				17:00		23	29	20			
5:15		0	0	0				17:15		17	23	22			
5:30		0	0	0				17:30		24	24	16			
5:45		0	0	1				17:45		34	23	36			
6:00		1	1	1				18:00		46	18	43			
6:15		0	0	0				18:15		27	17	26			
6:30		4	5	2				18:30		18	45	29			
6:45		13	8	6				18:45		43	36	25			
7:00		8	12	15				19:00		45	21	27			
7:15		12	17	12				19:15		39	13	36			
7:30		9	5	14				19:30		48	50	37			
7:45		5	9	6				19:45		13	14	12			
8:00		9	9	16				20:00		33	15	28			
8:15		13	14	9				20:15		22	16	10			
8:30		17	7	10				20:30		27	20	16			
8:45		17	19	12				20:45		44	25	29			
9:00		19	29	27				21:00		25	26	19			
9:15		14	17	13				21:15		16	13	13			
9:30		8	17	11				21:30		22	17	10			
9:45		12	10	17				21:45		22	9	12			
10:00		17	34	21				22:00		7	13	14			
10:15		28	24	36				22:15		4	15	7			
10:30		39	27	29				22:30		15	16	27			
10:45		23	15	13				22:45		3	6	8			
11:00		17	14	15				23:00		2	1	1			
11:15		11	44	22				23:15		1	0	0			
11:30		17	26	19				23:30		0	0	0			
11:45		25	15	15				23:45		0	0	0			

# Vehicle Speed Summary

Saanich Engineering Department

Count Id: P0001-01

Filename: Lambrick Way north of Feltham Rd-Mar-2020.xlsm

**Location:** Lambrick Way north of Feltham Rd

Note:

Direction: **North-South**

Dates: **March 03, 2020 To March 05, 2020**

*Filtered data*

AVG. SPEED	<b>20</b> mph	<b>33</b> km/h
50 % SPEED	<b>20</b> mph	<b>33</b> km/h
85 % SPEED	<b>24</b> mph	<b>38</b> km/h
95 % SPEED	<b>26</b> mph	<b>41</b> km/h

Location Map



**Lambrick Way north of Feltham Rd**

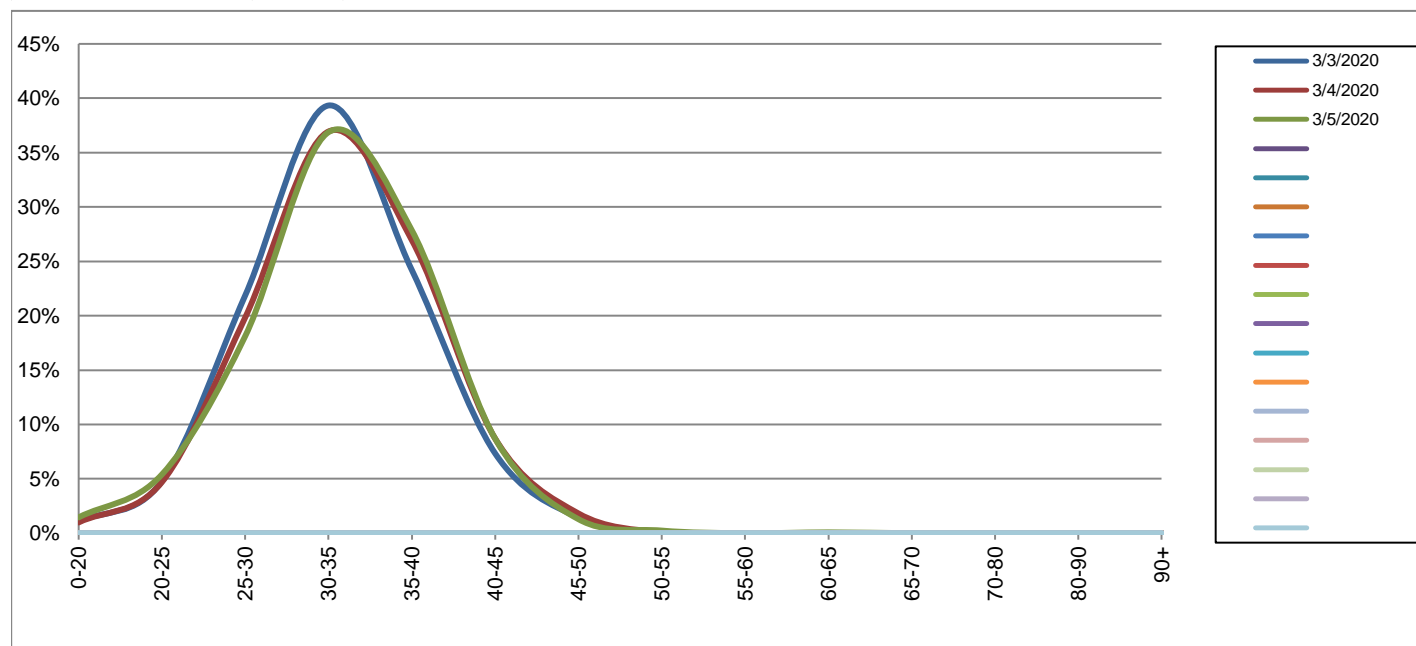
Northbound

March 3, 2020 to March 5, 2020

Daily Speed Bin Percentages															Daily Speed Bin Volumes														Total	Avg.
Bin #	1	2	3	4	5	6	7	8	9	10	11	12	13	14	1	2	3	4	5	6	7	8	9	10	11	12	13	14	Volume	Speed
Bin Speeds	0-20	20-25	25-30	30-35	35-40	40-45	45-50	50-55	55-60	60-65	65-70	70-80	80-90	90+	0-20	20-25	25-30	30-35	35-40	40-45	45-50	50-55	55-60	60-65	65-70	70-80	80-90	90+		
3/3/2020	1.1%	4.8%	21.9%	39.3%	24.2%	7.3%	1.4%	0.0%	0.0%	0.0%	0.0%	0.0%	0.0%	0.0%	14	63	289	520	320	97	19	0	0	0	0	0	0	0	1322	33
3/4/2020	1.0%	4.7%	19.8%	36.9%	26.9%	8.7%	1.8%	0.1%	0.0%	0.0%	0.0%	0.0%	0.0%	0.0%	13	62	262	488	356	115	24	1	0	0	0	0	0	0	1321	33
3/5/2020	1.4%	5.4%	18.1%	36.9%	27.9%	8.7%	1.3%	0.2%	0.0%	0.1%	0.0%	0.0%	0.0%	0.0%	18	67	225	458	346	108	16	3	0	1	0	0	0	0	1242	33
<b>Total</b>	1.2%	4.9%	20.0%	37.7%	26.3%	8.2%	1.5%	0.1%	0.0%	0.0%	0.0%	0.0%	0.0%	0.0%	45	192	776	1466	1022	320	59	4	0	1	0	0	0	0	3885	33

**Speed Data Summary**

Bin #	1	2	3	4	5	6	7	8	9	10	11	12	13	14	Total
Bin Speeds	0-20	20-25	25-30	30-35	35-40	40-45	45-50	50-55	55-60	60-65	65-70	70-80	80-90	90+	
Survey Total	45	192	776	1466	1022	320	59	4	0	1	0	0	0	0	3885
% Total	1.2%	4.9%	20.0%	37.7%	26.3%	8.2%	1.5%	0.1%	0.0%	0.0%	0.0%	0.0%	0.0%	0.0%	100%
Accumulated %	1.2%	6.1%	26.1%	63.8%	90.1%	98.4%	99.9%	100.0%	100.0%	100.0%	100.0%	100.0%	100.0%	100%	
Inverse Accum. %	98.8%	93.9%	73.9%	36.2%	9.9%	1.6%	0.1%	0.0%	0.0%	0.0%	0.0%	0.0%	0.0%	0.0%	
Average Speed	33 KM/H														



Site notes:

**Lambrick Way north of Feltham Rd**

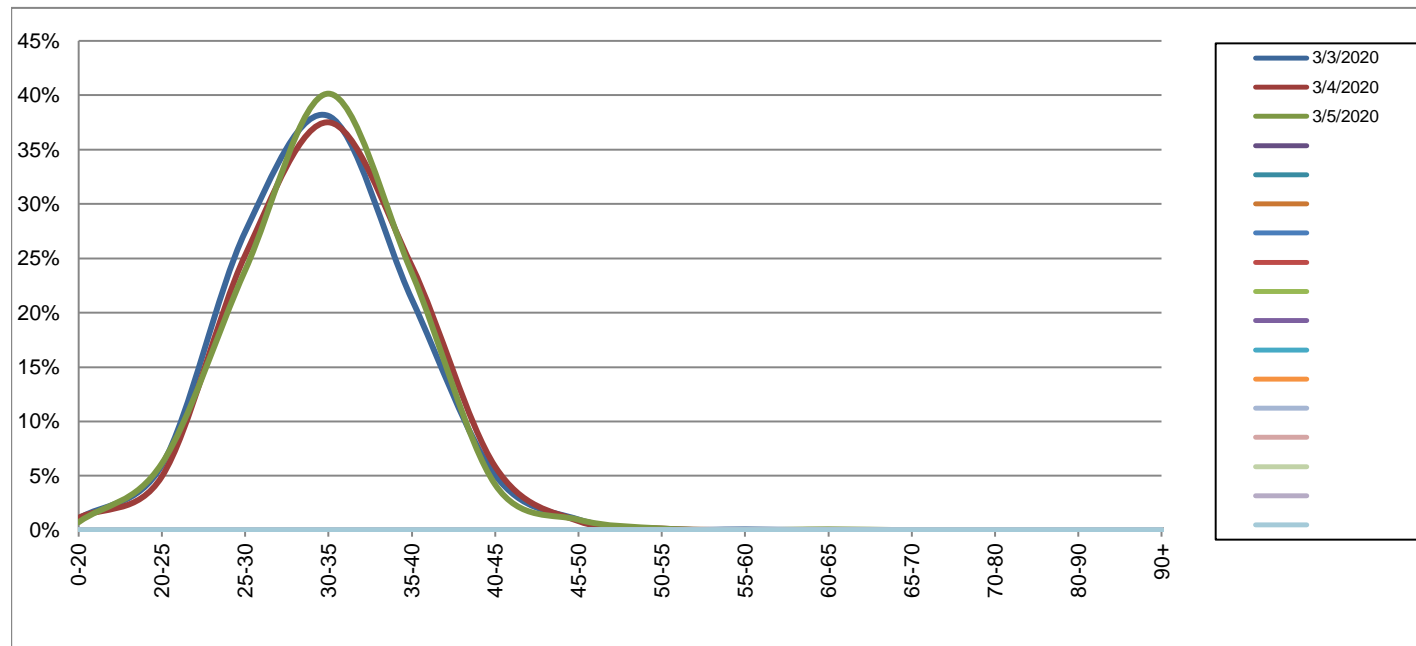
Southbound

March 3, 2020 to March 5, 2020

Daily Speed Bin Percentages															Daily Speed Bin Volumes														Total	Avg.
Bin #	1	2	3	4	5	6	7	8	9	10	11	12	13	14	1	2	3	4	5	6	7	8	9	10	11	12	13	14	Volume	Speed
Bin Speeds	0-20	20-25	25-30	30-35	35-40	40-45	45-50	50-55	55-60	60-65	65-70	70-80	80-90	90+	0-20	20-25	25-30	30-35	35-40	40-45	45-50	50-55	55-60	60-65	65-70	70-80	80-90	90+		
3/3/2020	1.1%	6.0%	27.4%	38.1%	21.2%	5.1%	1.0%	0.1%	0.1%	0.0%	0.0%	0.0%	0.0%	0.0%	14	79	363	504	281	67	13	1	1	0	0	0	0	0	1323	32
3/4/2020	1.1%	4.9%	25.3%	37.5%	24.3%	5.8%	0.8%	0.2%	0.0%	0.0%	0.0%	0.0%	0.0%	0.0%	15	65	333	494	320	77	11	2	0	0	0	0	0	0	1317	32
3/5/2020	0.7%	6.1%	23.9%	40.1%	23.7%	4.2%	1.0%	0.2%	0.0%	0.1%	0.0%	0.0%	0.0%	0.0%	9	76	296	497	293	52	12	2	0	1	0	0	0	0	1238	32
<b>Total</b>	1.0%	5.7%	25.6%	38.6%	23.1%	5.1%	0.9%	0.1%	0.0%	0.0%	0.0%	0.0%	0.0%	0.0%	38	220	992	1495	894	196	36	5	1	1	0	0	0	0	3878	32

**Speed Data Summary**

Bin #	1	2	3	4	5	6	7	8	9	10	11	12	13	14	Total
Bin Speeds	0-20	20-25	25-30	30-35	35-40	40-45	45-50	50-55	55-60	60-65	65-70	70-80	80-90	90+	
Survey Total	38	220	992	1495	894	196	36	5	1	1	0	0	0	0	3878
% Total	1.0%	5.7%	25.6%	38.6%	23.1%	5.1%	0.9%	0.1%	0.0%	0.0%	0.0%	0.0%	0.0%	0.0%	100%
Accumulated %	1.0%	6.7%	32.2%	70.8%	93.8%	98.9%	99.8%	99.9%	100.0%	100.0%	100.0%	100.0%	100.0%	100%	
Inverse Accum. %	99.0%	93.3%	67.8%	29.2%	6.2%	1.1%	0.2%	0.1%	0.0%	0.0%	0.0%	0.0%	0.0%	0.0%	
Average Speed	32 KM/H														



Site notes:

**Lambrick Way north of Feltham Rd**

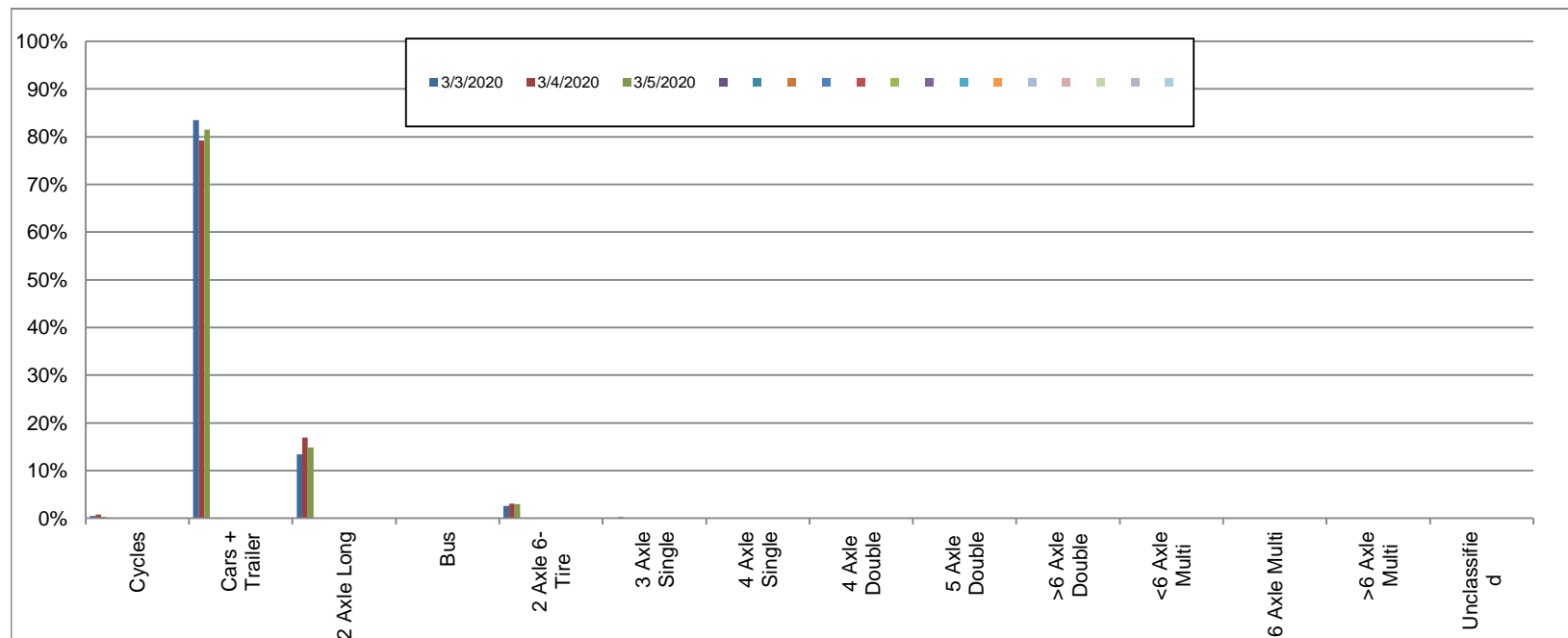
Northbound

March 3, 2020 to March 5, 2020

Daily Class Bin Percentages															Daily Class Bin Volumes														
Bin #	1	2	3	4	5	6	7	8	9	10	11	12	13	14	1	2	3	4	5	6	7	8	9	10	11	12	13	14	Total Volume
Bin Class	Cycles	Cars + Trailer	2 Axle Long	Bus	2 Axle 6-Tire	3 Axle Single	4 Axle Single	4 Axle Double	5 Axle Double	>6 Axle Double	<6 Axle Multi	6 Axle Multi	>6 Axle Multi	Unclassified	Cycles	Cars + Trailer	2 Axle Long	Bus	2 Axle 6-Tire	3 Axle Single	4 Axle Single	4 Axle Double	5 Axle Double	>6 Axle Double	<6 Axle Multi	6 Axle Multi	>6 Axle Multi	Unclassified	
3/3/2020	0.5%	83.5%	13.4%	0.0%	2.6%	0.0%	0.0%	0.0%	0.0%	0.0%	0.0%	0.0%	0.0%	0.0%	7	1104	177	0	34	0	0	0	0	0	0	0	0	0	1322
3/4/2020	0.8%	79.2%	17.0%	0.0%	3.0%	0.1%	0.0%	0.0%	0.0%	0.0%	0.0%	0.0%	0.0%	0.0%	10	1046	224	0	40	1	0	0	0	0	0	0	0	0	1321
3/5/2020	0.3%	81.5%	14.8%	0.0%	3.0%	0.3%	0.0%	0.1%	0.0%	0.0%	0.0%	0.0%	0.0%	0.0%	4	1012	184	0	37	4	0	1	0	0	0	0	0	0	1242
<b>Total</b>	<b>0.5%</b>	<b>81.4%</b>	<b>15.1%</b>	<b>0.0%</b>	<b>2.9%</b>	<b>0.1%</b>	<b>0.0%</b>	<b>0.0%</b>	<b>0.0%</b>	<b>0.0%</b>	<b>0.0%</b>	<b>0.0%</b>	<b>0.0%</b>	<b>0.0%</b>	<b>21</b>	<b>3162</b>	<b>585</b>	<b>0</b>	<b>111</b>	<b>5</b>	<b>0</b>	<b>1</b>	<b>0</b>	<b>0</b>	<b>0</b>	<b>0</b>	<b>0</b>	<b>3885</b>	

**Class Data Summary**

Bin #	1	2	3	4	5	6	7	8	9	10	11	12	13	14	Total Volume
Bin Class	Cycles	Cars + Trailer	2 Axle Long	Bus	2 Axle 6-Tire	3 Axle Single	4 Axle Single	4 Axle Double	5 Axle Double	>6 Axle Double	<6 Axle Multi	6 Axle Multi	>6 Axle Multi	Unclassified	Total Volume
<b>Survey Total</b>	21	3162	585	0	111	5	0	1	0	0	0	0	0	0	3885
<b>% Total</b>	0.5%	81.4%	15.1%	0.0%	2.9%	0.1%	0.0%	0.0%	0.0%	0.0%	0.0%	0.0%	0.0%	0.0%	100%
<b>Accumulated %</b>	0.5%	81.9%	97.0%	97.0%	99.8%	100.0%	100.0%	100.0%	100.0%	100.0%	100.0%	100.0%	100.0%	100.0%	
<b>Inv. Accum. %</b>	99.5%	18.1%	3.0%	3.0%	0.2%	0.0%	0.0%	0.0%	0.0%	0.0%	0.0%	0.0%	0.0%	0.0%	



**Classification Descriptions**

Bin #	Bin Description
1	Motorcycles
2	Passenger cars, including those with recreational trailers
3	2-axle pick-ups, vans, and RVs, including those with recreational trailers
4	Buses
5	2-axle, 6-tire single units
6	3-axle single units
7	4-axle single units
8	3-axle or 4-axle double unit
9	5-axle double unit
10	6-, 7-, or 8-axle double unit
11	5-axle multiple unit
12	6-axle multiple unit
13	7-or-more-axle multiple unit
14	Vehicles that could not be classified

Site notes:



Lambrick Way north of Feltham Rd

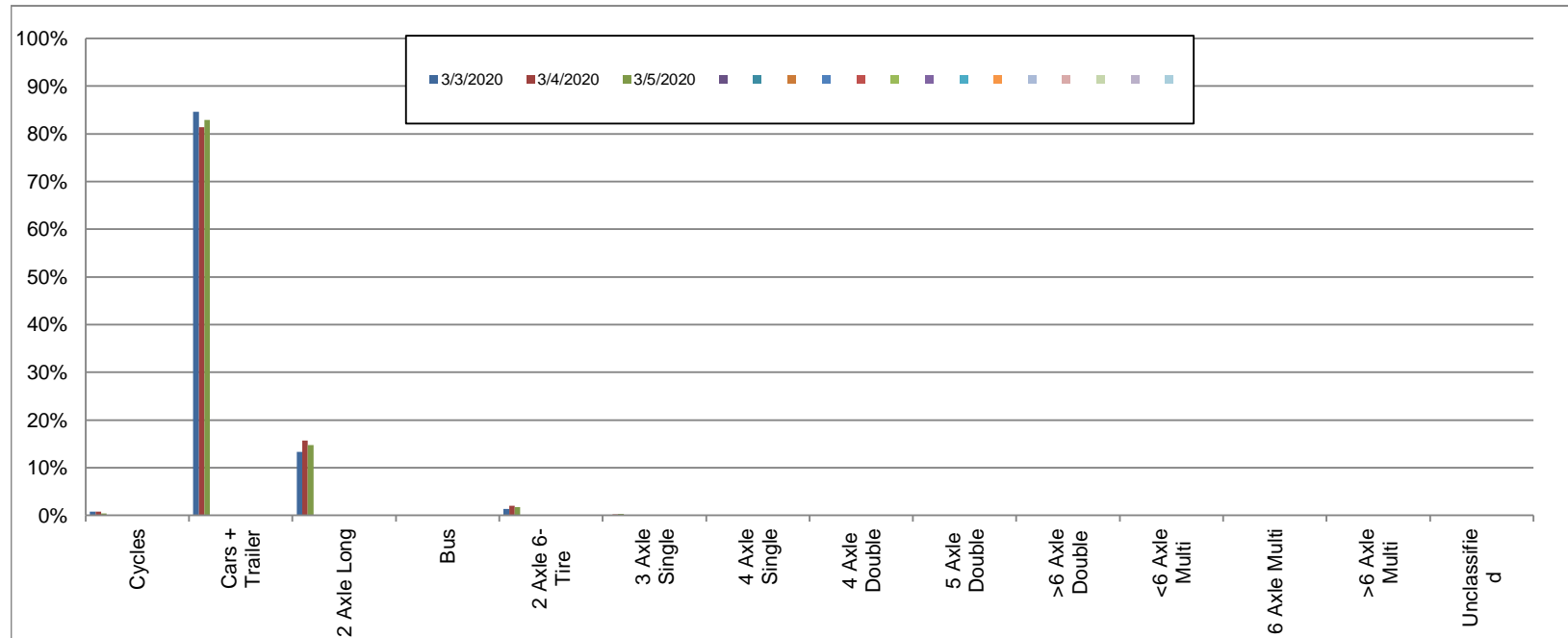
Southbound

March 3, 2020 to March 5, 2020

Daily Class Bin Percentages															Daily Class Bin Volumes														
Bin #	1	2	3	4	5	6	7	8	9	10	11	12	13	14	1	2	3	4	5	6	7	8	9	10	11	12	13	14	Total Volume
Bin Class	Cycles	Cars + Trailer	2 Axle Long	Bus	2 Axle 6-Tire	3 Axle Single	4 Axle Single	4 Axle Double	5 Axle Double	>6 Axle Double	<6 Axle Multi	6 Axle Multi	>6 Axle Multi	Unclassified	Cycles	Cars + Trailer	2 Axle Long	Bus	2 Axle 6-Tire	3 Axle Single	4 Axle Single	4 Axle Double	5 Axle Double	>6 Axle Double	<6 Axle Multi	6 Axle Multi	>6 Axle Multi	Unclassified	
3/3/2020	0.8%	84.6%	13.3%	0.0%	1.4%	0.0%	0.0%	0.0%	0.0%	0.0%	0.0%	0.0%	0.0%	0.0%	10	1119	176	0	18	0	0	0	0	0	0	0	0	0	1323
3/4/2020	0.8%	81.4%	15.6%	0.0%	2.0%	0.2%	0.0%	0.0%	0.0%	0.0%	0.0%	0.0%	0.0%	0.0%	10	1072	206	0	26	3	0	0	0	0	0	0	0	0	1317
3/5/2020	0.4%	82.9%	14.7%	0.0%	1.7%	0.3%	0.0%	0.0%	0.0%	0.0%	0.0%	0.0%	0.0%	0.0%	5	1026	182	0	21	4	0	0	0	0	0	0	0	0	1238
<b>Total</b>	<b>0.6%</b>	<b>83.0%</b>	<b>14.5%</b>	<b>0.0%</b>	<b>1.7%</b>	<b>0.2%</b>	<b>0.0%</b>	<b>0.0%</b>	<b>0.0%</b>	<b>0.0%</b>	<b>0.0%</b>	<b>0.0%</b>	<b>0.0%</b>	<b>0.0%</b>	<b>25</b>	<b>3217</b>	<b>564</b>	<b>0</b>	<b>65</b>	<b>7</b>	<b>0</b>	<b>0</b>	<b>0</b>	<b>0</b>	<b>0</b>	<b>0</b>	<b>0</b>	<b>0</b>	<b>3878</b>

Class Data Summary

Bin #	1	2	3	4	5	6	7	8	9	10	11	12	13	14	Total Volume
Bin Class	Cycles	Cars + Trailer	2 Axle Long	Bus	2 Axle 6-Tire	3 Axle Single	4 Axle Single	4 Axle Double	5 Axle Double	>6 Axle Double	<6 Axle Multi	6 Axle Multi	>6 Axle Multi	Unclassified	Total Volume
<b>Survey Total</b>	25	3217	564	0	65	7	0	0	0	0	0	0	0	0	3878
<b>% Total</b>	0.6%	83.0%	14.5%	0.0%	1.7%	0.2%	0.0%	0.0%	0.0%	0.0%	0.0%	0.0%	0.0%	0.0%	100%
<b>Accumulated %</b>	0.6%	83.6%	98.1%	98.1%	99.8%	100.0%	100.0%	100.0%	100.0%	100.0%	100.0%	100.0%	100.0%	100.0%	
<b>Inv. Accum. %</b>	99.4%	16.4%	1.9%	1.9%	0.2%	0.0%	0.0%	0.0%	0.0%	0.0%	0.0%	0.0%	0.0%	0.0%	



Classification Descriptions

Bin #	Bin Description
1	Motorcycles
2	Passenger cars, including those with recreational trailers
3	2-axle pick-ups, vans, and RVs, including those with recreational trailers
4	Buses
5	2-axle, 6-tire single units
6	3-axle single units
7	4-axle single units
8	3-axle or 4-axle double unit
9	5-axle double unit
10	6-, 7-, or 8-axle double unit
11	5-axle multiple unit
12	6-axle multiple unit
13	7-or-more-axle multiple unit
14	Vehicles that could not be classified

Site notes: